

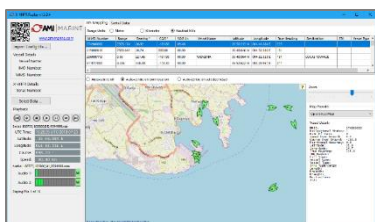
## PAPERLESS COURSE RECORDER

The X-VCR is a new generation Course Recorder supporting both paperless course recording and traditional dot matrix printing, providing a cost-effective solution for any vessel.

The 7" Touch Screen Display, shows real-time data in various layouts, allowing the user freedom to view what they need, when required.

The X-VCR can record and display data from:

- Gyro Heading
- GPS data
- Rate of Turn
- Rudder Angle (Single or Dual Rudder)



AMI Marine Replay Software

Data is stored on a 500GB solid-state internal drive, providing up to 36 months of data which can be extracted via the ethernet port on the front of the display for review and playback at any time.

The replay software is easy to use, that can be utilised to reconstruct an accurate history of events for general review, crew training and to assist with safety procedures.

As with AMI's previous course recorders, an optional printer, (part no. PRN-0001) can be supplied as a pre-configured plug and play connection to this course recorder, if a paper printout is preferred to the paperless function.

With the printer enabled, the X-VCR has an added feature to select printing time delays. This allows the user to set delays during the printing of data. This can be every 1 minute up to every 15 minutes to maximise the range of data shown on a single page.

### Advantages

- 7" touch Screen display with real-time graphical presentation of the received data
- Accommodates single and dual rudder systems
- Paperless design with up to 36 months of voyage data stored on an internal storage drive
- Graphical display of Heading, GPS data, Rate of Turn and Rudder Angle (Single or Dual Rudder)
- Optional Printer for a permanent voyage record
- Replay Software included within the purchase price and free updates for the operational life on this unit)
- Multiple screen layouts for optional views of recorded data
- Choice of 'Light' and 'Dark' themes
- 'Day' and 'Night' Mode
- Additional NMEA data recording capabilities\*

*\*Standard course recorder data can be physically printed, but all additional recorded data will be recorded and viewed within the replay software only.*

## SPECIFICATIONS

### STANDARD SYSTEM



#### 7" MAIN PROCESSOR AND DISPLAY - DSP-0029

**FEATURES:**

High Resolution Touch Screen Display  
Solid State Internal Storage,  
for approx. 36 months of data  
Trunnion for desk or ceiling mounting

**POWER:** 24vDC via the Terminal Interface

**DIMENSIONS:** 310 x 190 x 190mm 2.8kg



#### TERMINAL INTERFACE - MEU-0020

**FEATURES:**

3x NMEA 0183 Data Inputs  
1x RS232 ASCII Data Outputs  
All input and output ports are opto-isolated

Printers options available

**POWER:** 24vDC

**DIMENSIONS:** 180 x 150 x 50mm 800g

#### STANDARD SYSTEM – PACKED WEIGHTS AND DIMENSIONS FOR SHIPPING:

36x36x28cm, 4.7kg

*Includes the 7" Touch Screen Display, Terminal Interface and 2m Interconnection cable*

### OPTIONAL EXTRAS

#### PRINTER - PRN-0001

**FEATURES:** 80 columns, Serial Port, for fanfold or paper roll.  
Supplied as an optional extra

**PAPER OPTIONS:** Suggested to be used with A4 paper sheets, or alternatively can be used with fanfold and paper rolls.

**POWER:** 110 or 220v AC

**CABLE SUPPLIED:** 5m length

**ENCLOSURE:** 362 x 275 x 154mm 4.1kg

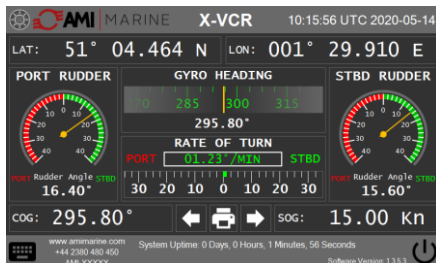


#### SUN VISOR - DSP-0015

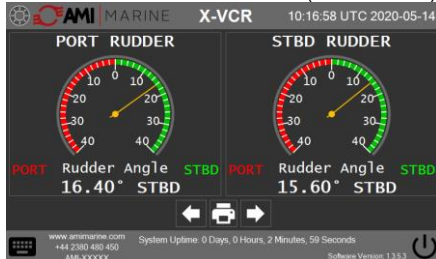
**FEATURES:**

Attached to the front of the display to help prevent glare from direct sun light

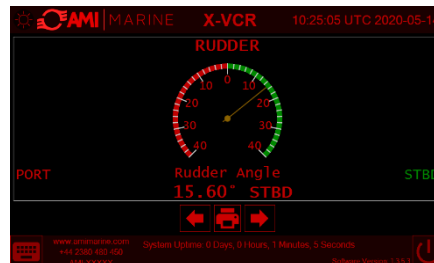
### SYSTEM DISPLAY OPTIONS



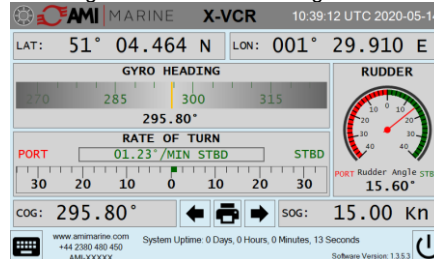
Main Screen with Dual Rudder (Dark Theme)



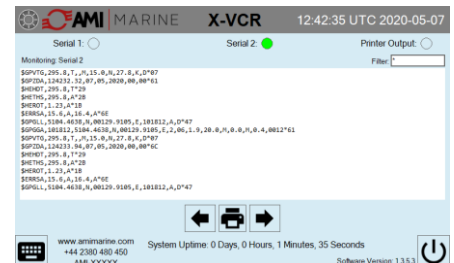
Dual Rudder (Dark Theme)



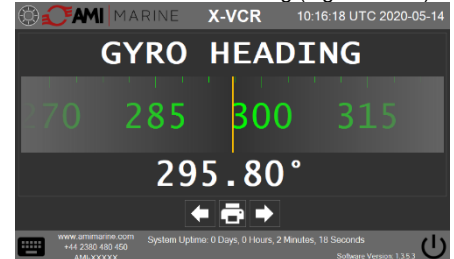
Single Rudder Screen in Night Mode



Gyro Heading, Rudder, Rate of Turn, SOG and COG (Light Theme)



Realtime NMEA monitoring (Light Theme)



Gyro Heading (Dark Theme)

*All features and specifications are subject to change without notice*

