



MINI VOYAGE DATA RECORDER

This premium Data Recorder system is designed to be installed on workboats, support vessels, and all other types of smaller vessels that are exempted from carrying full VDR systems. The X-MDR system may also be configured to static mode for office-based Port Authorities that monitor vessel traffic.

The X-MDR Pro accommodates optional CCTV recording, synchronised VHF transmissions, optional bridge audio, and position data as a cost-effective and secure solution. It provides reliable and easy to use playback software suite for analyses of individual vessel movements and well suited to vessels within large workboat fleets.

REAL-TIME SURVEILLANCE AND PLAYBACK

The X-MDR features a 10.1" touch screen that displays live data and intuitive, user-friendly software. This allows you to monitor recorded information and view CCTV video feeds in real-time.

The specially designed software offers the user a specific, time-stamped selection of CCTV feeds, synchronised to all recorded data, providing high-definition video playback in conjunction with recorded vessel data.

TAILORED TO YOUR REQUIREMENTS

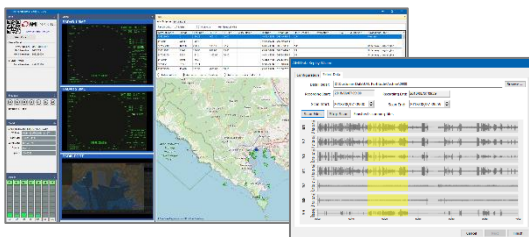
The X-MDR may be configured to your vessel's individual requirements, which seamlessly connects to all popular brands of bridge equipment. With additional data recording modules, you can maximise your system with VGA and DVI image capture (Radar/ECDIS and Chart Plotters etc.) as well as image over LAN (IEC 61162-450)

The system has 9x NMEA 0183 inputs, 8x Bridge Audio inputs that can be configured for either microphones or VHF signals and can accommodate up to 8 CCTV inputs.

Additional Recording Modules available;

- ECDIS over ethernet (*IEC 61162-450*)
- DVI Radar/Chart Plotters capture
- Additional Audio inputs
- Optional VHF interface
- Battery Backed UPS upgrade
- Additional NMEA 0183 inputs

REPLAY SOFTWARE



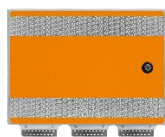
The AMI Marine Replay software is a unique tool that offers features like 'Audio Scan' and 'Jump to Incident.' These functions allow engineers, ship's crew, accident investigators, and even crew trainers to easily review data in an intuitive manner.

The process of downloading data is straightforward and easy. All you need to do is connect your laptop or office PC to the Ethernet port on the touch screen display. This makes downloading data easy and user-friendly whenever required.

SYS-0088 X-MDR SL SLIM LINE MARINE DATA RECORDER

DATASHEET

SYS-0088 - SYSTEM SPECIFICATIONS



1x MAIN ELECTRONIC UNIT - MEU-0020

FEATURES:

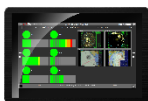
8x Audio Channels
*- Can be configured for either
Microphones or VHF Signals*

9x NMEA Data Inputs

1x Capsule Output

POWER: 24vDC

DIMENSIONS: 400 x 300 x 125mm, 7.7kg



1x INDUSTRIAL TOUCH SCREEN DISPLAY - DSP-0037

FEATURES:

10.1" Display
High Resolution Touch Screen Display
VESA, Flush and Desktop mounting options

POWER: Supplied from the MEU

DIMENSIONS: 200 x 280 x 68.2mm, 2kg



2x INDOOR MICROPHONE - MIC-0004

FEATURES:

600-ohm balanced audio
Built in Self-Test

POWER: Supplied from the MEU

DIMENSIONS: each 25 x 125 x 52mm, 100g

1x X-MDR MEU TO DISPLAY CABLE KIT - KIT-0031

FEATURES:

1* 5m System Status Cable
2* 5m USB Cable
1* 5m CAT5E Patch Cable
1* 5m Display Power Cable

OPTIONAL EQUIPMENT



INDOOR MICROPHONE - MIC-0004

FEATURES:

600-ohm balanced audio
Built in Self-Test

POWER: Supplied from the MEU

DIMENSIONS: 26.5 x 130.5 x 52.2mm, 80g



OUTDOOR MICROPHONE - MIC-0013

FEATURES:

IP66 Waterproof
600 ohm balanced audio
Built in Self-Test

POWER: Supplied from the MEU

DIMENSIONS: 26.5 x 130.5 x 52.2mm, 80g



EXTERNAL NETWORK CAMERA INTERFACE - INT-0053

FEATURES:

Gigabit Ethernet switch hub
5 x 10/100/1000Mbps, Auto-Negotiation, Auto-MDI/MDIX Ports

POWER: Supplied from the MEU

DIMENSIONS: 99.8 x 98 x 25 mm, 100g

*8 Port Interface available on request.



CCTV CAMERA - CAM-0001

FEATURES:

Ethernet connection
2 MP High-Definition resolution
IP67 and IK10 rated
Low light and IR range up to 30m

POWER: Supplied from the MEU

DIMENSIONS: 111 x 111 x 82.4mm, 100g



VIDEO CAPTURE CARD KIT - KIT-0059

FEATURES:

Video inputs such as ECDIS or Radar
Accepts video signal of up to 1920x1200
Comes with required fittings, DVI to VGA converter and USB cable.
A Capture Card Frame required for this unit.



BATTERY BACKED POWER SUPPLY UNIT - PSU-0023

FEATURES:

110 to 220vAC 50,60Hz
Auto switch over to Battery Input on AC fail
Battery Backup Options (2pcs required for each PSU)

- BAT-0004, 2 Hour Battery Backup
- BAT-0005, 2-4 Hour Battery Backup
- BAT-0014, 12 Hour Battery Backup

DIMENSIONS: 300 x 250 x 210mm, 3.6kg

STORAGE OPTIONS



FLOAT FREE CAPSULE - CAP-0013

FEATURES:

80GB Solid State storage
Minimum of 48 hours recording
Simple Ethernet connection

POWER: Supplied from the MEU

DIMENSIONS: 534 x 236 x 214mm, 2.1kg



FIXED HARDENED CAPSULE - CAP-0014

FEATURES:

64GB Solid State storage
Minimum of 48 hours recording
Supplied with 15m Cable
Supplied with PT9 NINETY ULB

POWER: 24vDC supplied from the MEU

DIMENSIONS: 218 x 277 x 355.13mm, 12kg



QUICK RELEASE STORAGE KIT - KIT-0065

FEATURES:

2TB Drive - LTRM
Powered by USB

Supplied with mounting bracket.

*All features and specifications are preliminary and may change without notice.