



# ELEKTRO DENİZ

Navigation & Communication Solutions

## ADVANCED NAVIGATION SOLUTIONS



# EDEL-EMES60

Combined Echo Sounder & Speed Log System

# Introduction

---

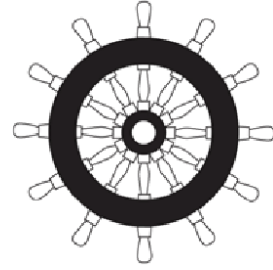
**ELEKTRO DENİZ**, founded in 1975 in Tophane, Istanbul, is a well- established company operating in sales, production ,service and new-building projects within the field of marine navigation and communication electronics.

As the official distributor of many globally recognized brands, we have successfully completed numerous commercial and military projects both in Turkiye and abroad.

**ELEKTRO DENİZ is ISO 9001:2015 , ISO 14001 :2015, ISO IEC 27001:2022 , ISO 45001:2018 certified.**

ELEKTRO DENİZ, offers innovative navigational solution EDEL-EMES60 Combined Echo Sounder and Speed Log System. This advance device transmits both speed log and echo sounder data simultaneously using a single sensor, providing easy installation and increasing operational efficiency.

**All EDEL-EMES60 navigational product range are IMO Wheelmarked.**



# EDEL-EMES60 Combined Echo Sounder & Speed Log system

EDEL EMES60, a state-of-the-art navigation system by Elektro Deniz, offering unmatched versatility by combining an echosounder and an electromagnetic (EM) speedlog in a single, integrated unit.



**IMO Compliant**  
**One Transducer, Two Devices**  
**Module B and D type approved**  
**Minimizing the risk of the mechanical damage**  
**Simplify installations and maintenance**



EDEL EMES60 apart is its configurable architecture, designed to meet diverse operational needs. It can be configured ;

## **1. Combined System (EDEL-EMES60)**

- Echo Sounder and Speed Log functions in one integrated unit

## **2. Echo Sounder Only (EDEL-EMES60-ES)**

- Depth detection with a single 120kHz transducer

## **3. Speed Log Only (EDEL-EMES60-SL)**

- Electro Magnetic Dual Axis Speed Log (STW)

# EDEL-EMES60 Benefits & Highlights

## Key Benefits:

Two systems in one – Echo Sounder + Speed Log with one sensor

Easy installation & maintenance – fewer parts, less downtime

IMO Wheelmarked & fully compliant – trusted for global fleets

Cost saving – reduced equipment, wiring, and spare parts

Flexible configuration – use as Echo Sounder, Speed Log, or both



## ⚙️ System Highlights

- Dual Functionality: Depth + Speed Through Water in one compact solution
- High Accuracy:
  - Echo Sounder: 0.05m or 0.5% of depth
  - Speed Log: 0.1kn or 1% of speed
- User-Friendly Interface:
  - 7" color touch screen, day/night modes, multilingual support
- Smart Design:
  - One transducer with gate valve installation → safer, faster, cheaper
- Future Ready:
  - Easy software upgrades via USB/Ethernet



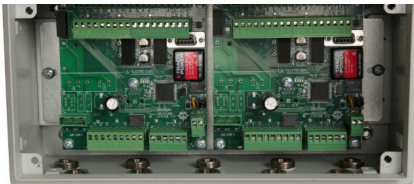
# EDEL-EMES60 Combined Echo Sounder & Speed Log System Specifications



- Resolution
- Operator interface
- Communication line
- Day/Night modes
- Software upgrade means
- Supported languages
- Calendar, clock
- Environmental
- Cutout dimensions
- Operating T°
- Weight
- Compass safe distance

### Display Unit (separate unit for each sub-system)

- 800x480, 7" WVGA
- Touch screen, tap & swipe operation
- RS422, Optional RS232
- Full range of backlight adjustment day/night color themes selection.
- USB line, USB flash device, Ethernet
- English, Norwegian, German, French, Spanish, Russian, Chinese
- Real time clock support or GPS time reference.
- IP68, front panel only
- 137x185mm, depth 36mm
- 15 - +55° C (storage -20 -+60°C )
- 0.7kg
- Standard : 65 cm, Steering 40cm



- External communication line
- Analog
- Alarm relays
- General purpose Input
- General purpose Output
- Software upgrade means
- Environmental
- Operating T°
- Dimensions, mm
- Weight

### Interface Unit (separate PCB for each sub-system)

- NMEA0183 rev4, /IEC 61162-1/ 3inputs/3 outputs,
- 1 output, 10Vpp or 4-20mA, fully programmable
- 2 Mechanical relays, one dedicated system power failure alarm
- 2 digital inputs (for synchronization, slave mode), fully programmable
- 2 optocoupler outputs, fully programmable
- USB line, USB flash device, Ethernet
- IP55
- 15-+60°
- 150x300x120
- 4kg



- Cable length
- Communication link
- Environmental
- Operating T°
- Sensor Dimensions
- Weight (with cable)

### Dual Sensor with Cable

- 40m (optional 40m)
- IEC 61162-1/2
- IP68, 6 bar continuous immersion in water
- 5-+60°
- H = 124mm, D = 60.2mm
- 7kg

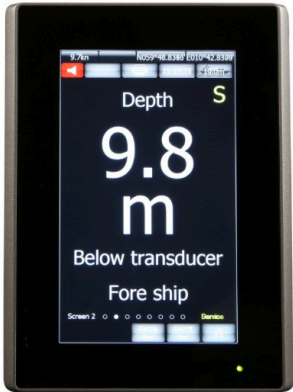



- Hull type
- Body material
- Pressure rating
- Operating T°
- Weight

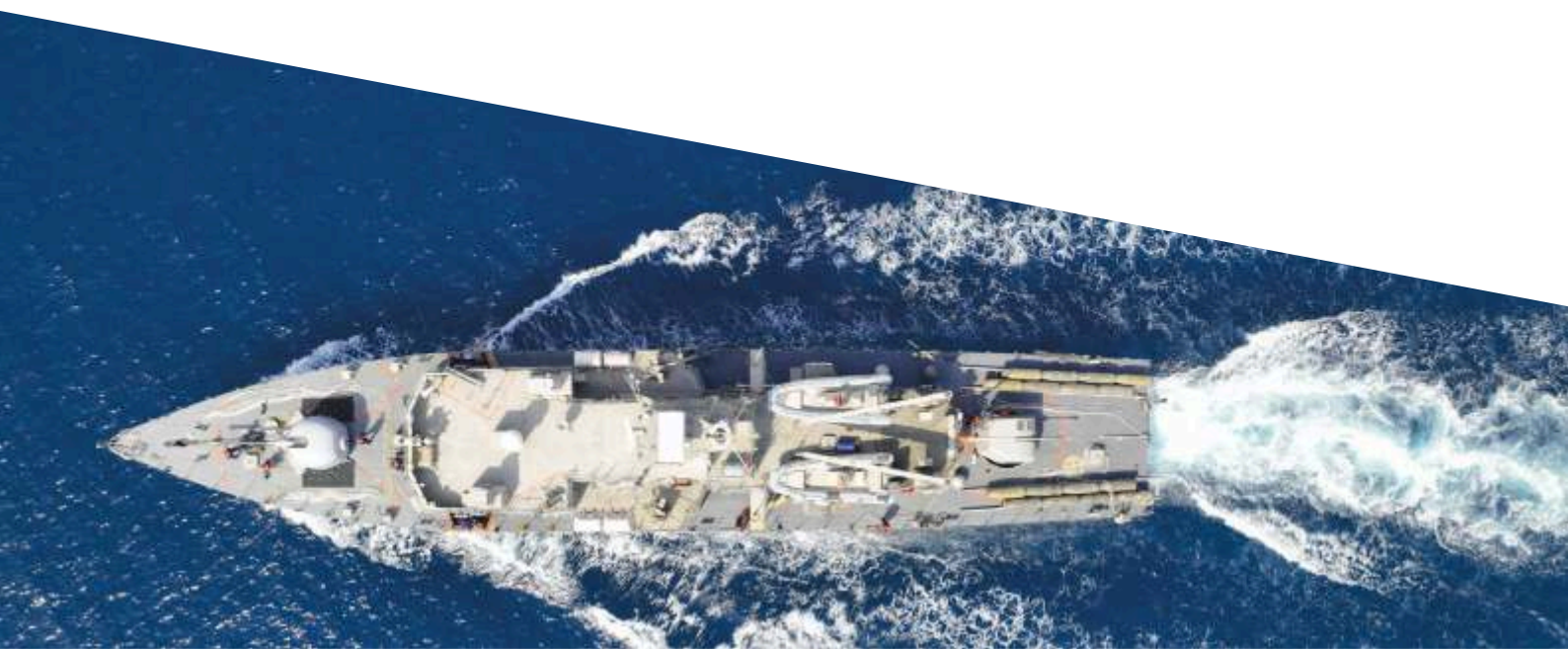
### Hull fitting unit (ball valve)

- Single and double
- Stainless steel
- 10 bar
- 5-+60°
- 18kg

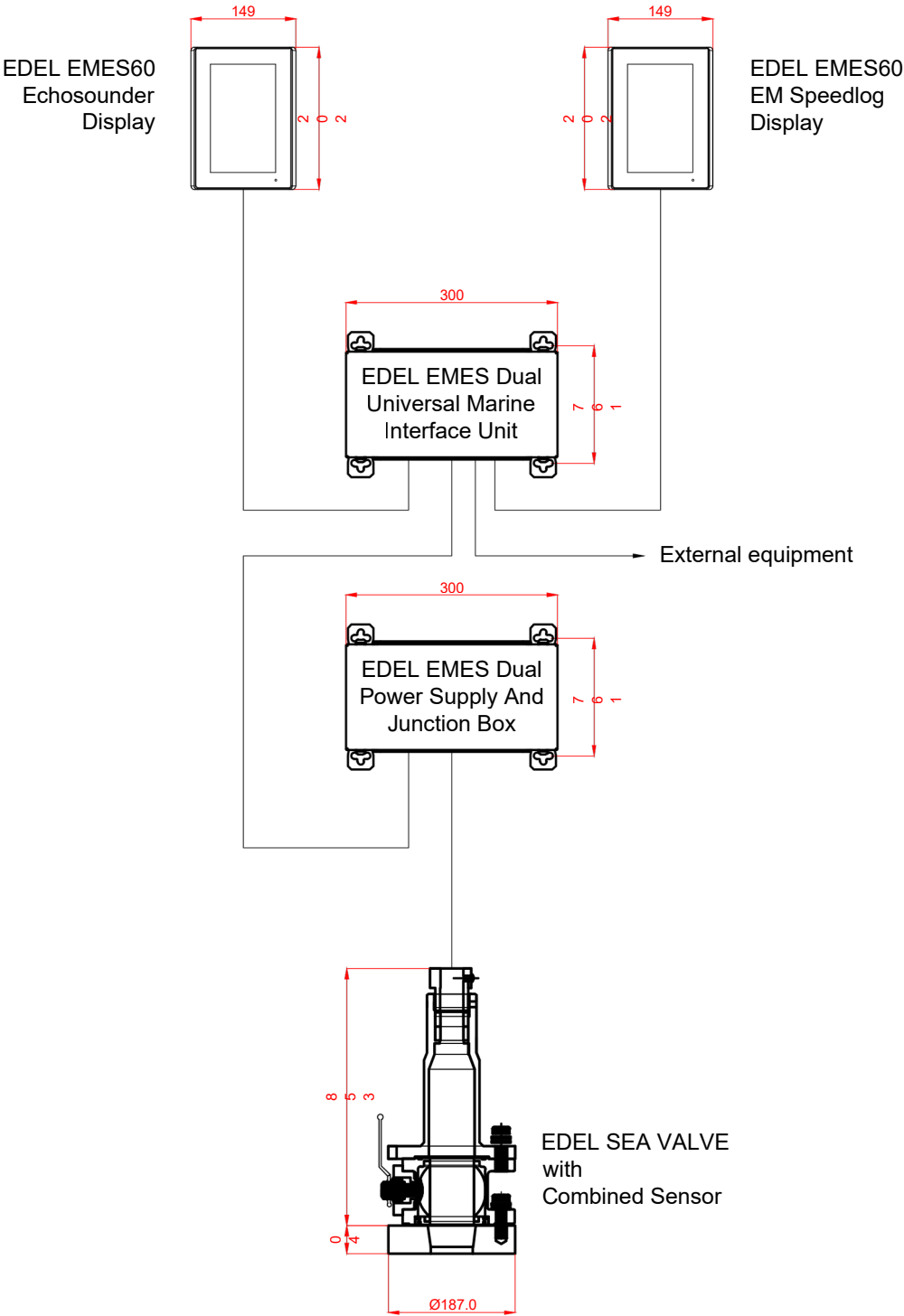
# EDEL-EMES60 Combined Echo Sounder & Speed Log System Specifications

		
Accuracy	<b>Performance Echosounder</b> 0.05m or 0.5% of depth, whatever is greater	
Resolution digital out	0.01m	
Resolution screen presentation	Depth < 100m : 0.1m Depth >=100m : 1.0m	
Range of measured values	0.7m-400m	
Range	user adjustable: 0-10m to 0-500m, auto	
Presentation units	meters, feet, fathoms	
Alarms and limits	Shallow and deep alarms adjustable alarms	

		
Accuracy	<b>Performance Speedlog</b> 0.1kn or 1% of speed, whatever is greater	
Resolution digital out	0.01knots	
Resolution screen presentation	0.1knots	
Range of measured values	+/- 60 knots on all axis, depending on the hull installation conditions	
Temperature Accuracy	Temperature sensor accurate to 1° C	
Range	-5 /+40 knots, +/-5 knots	
Presentation units	knots, mi/h	
Alarms and limits	Low and high speed limits	

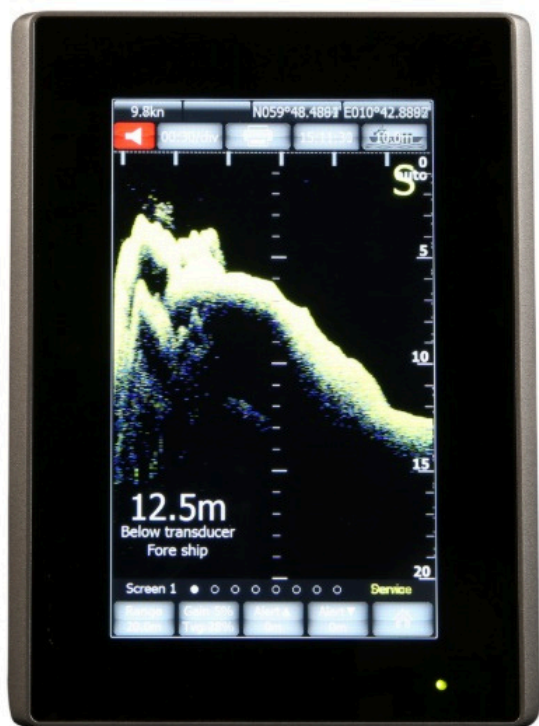


# EDEL-EMES60 Combined Echo Sounder & Speed Log System Structure



# EDEL-EMES60-ES Echo Sounder

The ELEKTRO DENIZ EDEL-EMES60-ES Echosounder solution ensures high reliability and low costs as there is only one sensor with gate valve. Furthermore, using latest state technology enables depth detection of vessel.



## Features and Benefits

Navigational Echosounder 120Khz transducer for shallow and deep water within the SOLAS limits

One sensor for Echosounder

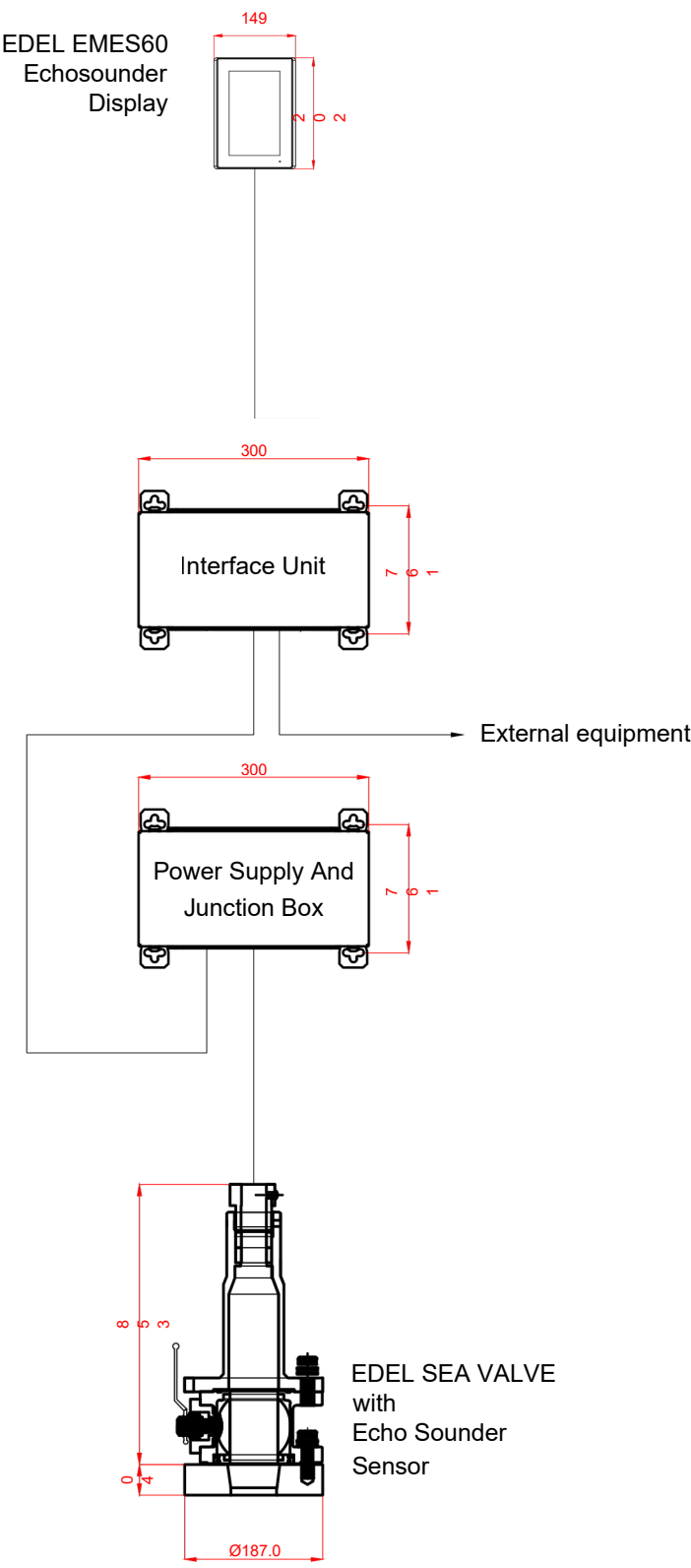
Sea Valve Installation

Color 7” touch screen Displays

Depth Range 0.7 to 400m



# EDEL-EMES60-ES Echo Sounder System Structure



# EDEL-EMES60 -SL Electromagnetic Speed Log

The ELEKTRO DENIZ EDEL-EMES60-SL Electro Magnetic Dual AXIS Speed log solution ensures high reliability and low costs as there is only one sensor with gate valve. Furthermore, using latest state technology enables speed detection of vessel.



## Features and Benefits

One sensor for Electro Magnetic Dual Axis Speed log

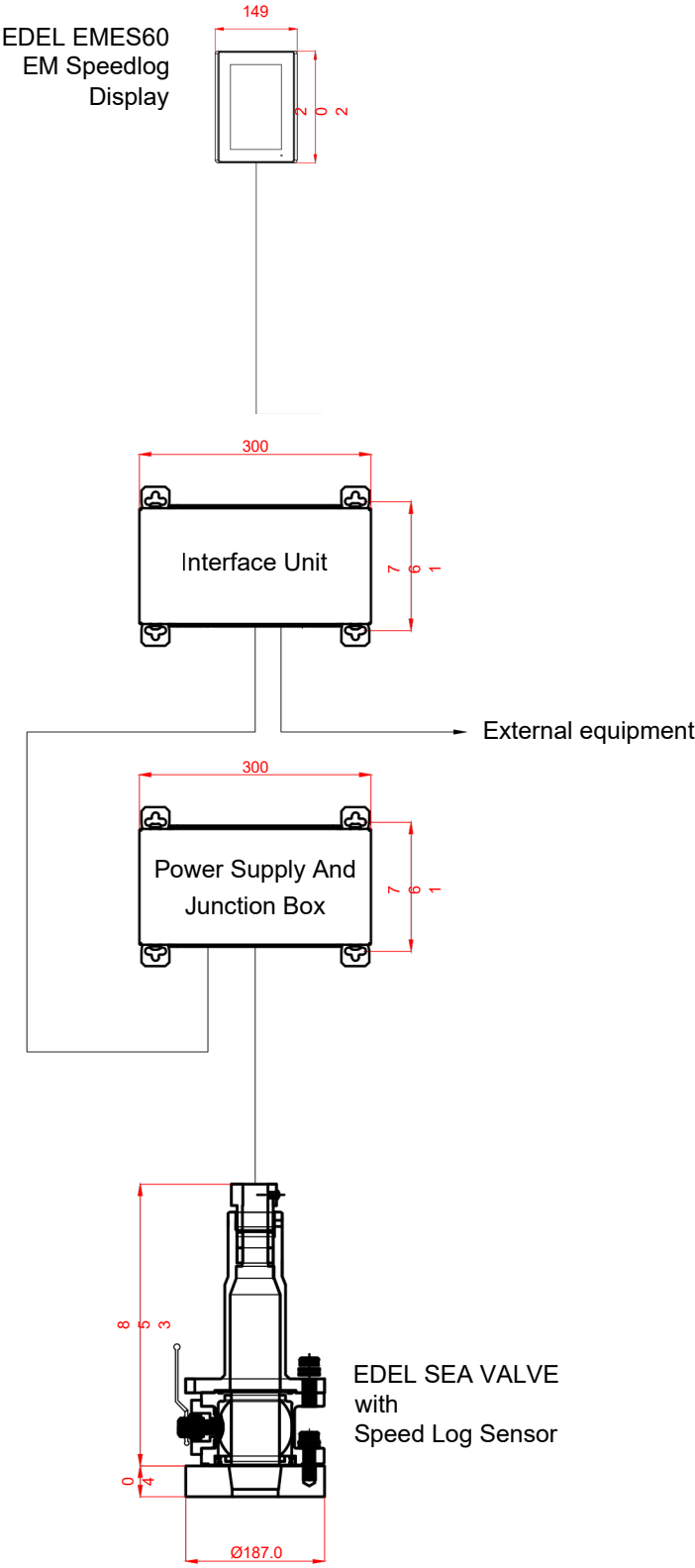
STW (speed through water)

Sea Valve Installation

Color 7” touch screen Displays

Speed range -5 to +40 knots

# EDEL-EMES60-SL Electromagnetic Speed Log Structure





## - COMPANIES WE REPRESENT -




# ELEKTRO DENİZ

Navigation & Communication Solutions

ELEKTRODENİZ DIŞ.TİC LTD. ŞTİ.

İstanbul Edüstri ve Tic. Serbest Bölgesi / Tuzla – İstanbul / Türkiye

0216 392 77 29 ✉ edel@elektrodeniz.com 🌐 www.elektrodeniz.com